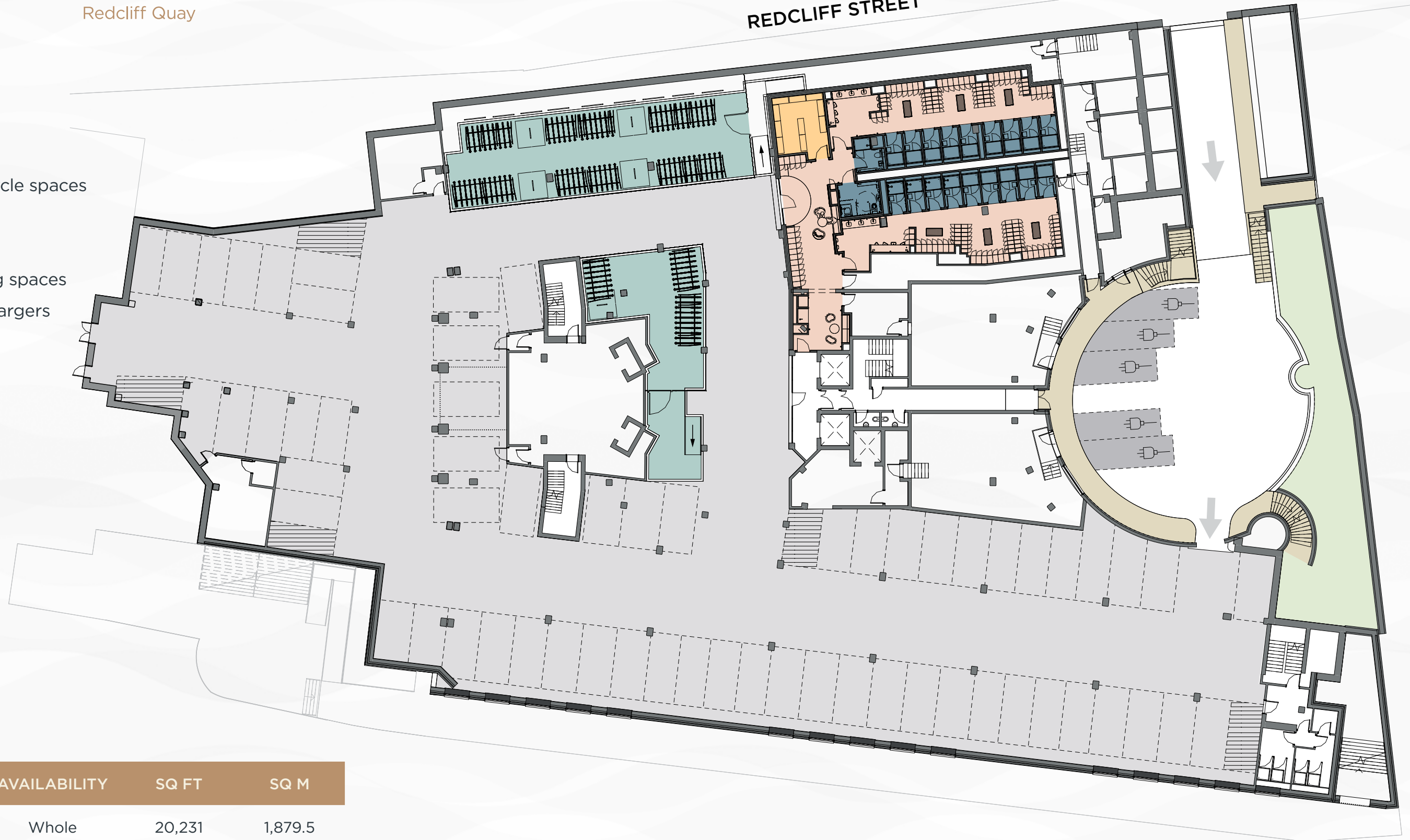


REDCLIFF STREET

BASEMENT

- 200 Secure cycle spaces
- 20 Showers
- 200 Lockers
- 50 Car parking spaces
- 5 Rapid EV chargers
- Drying room



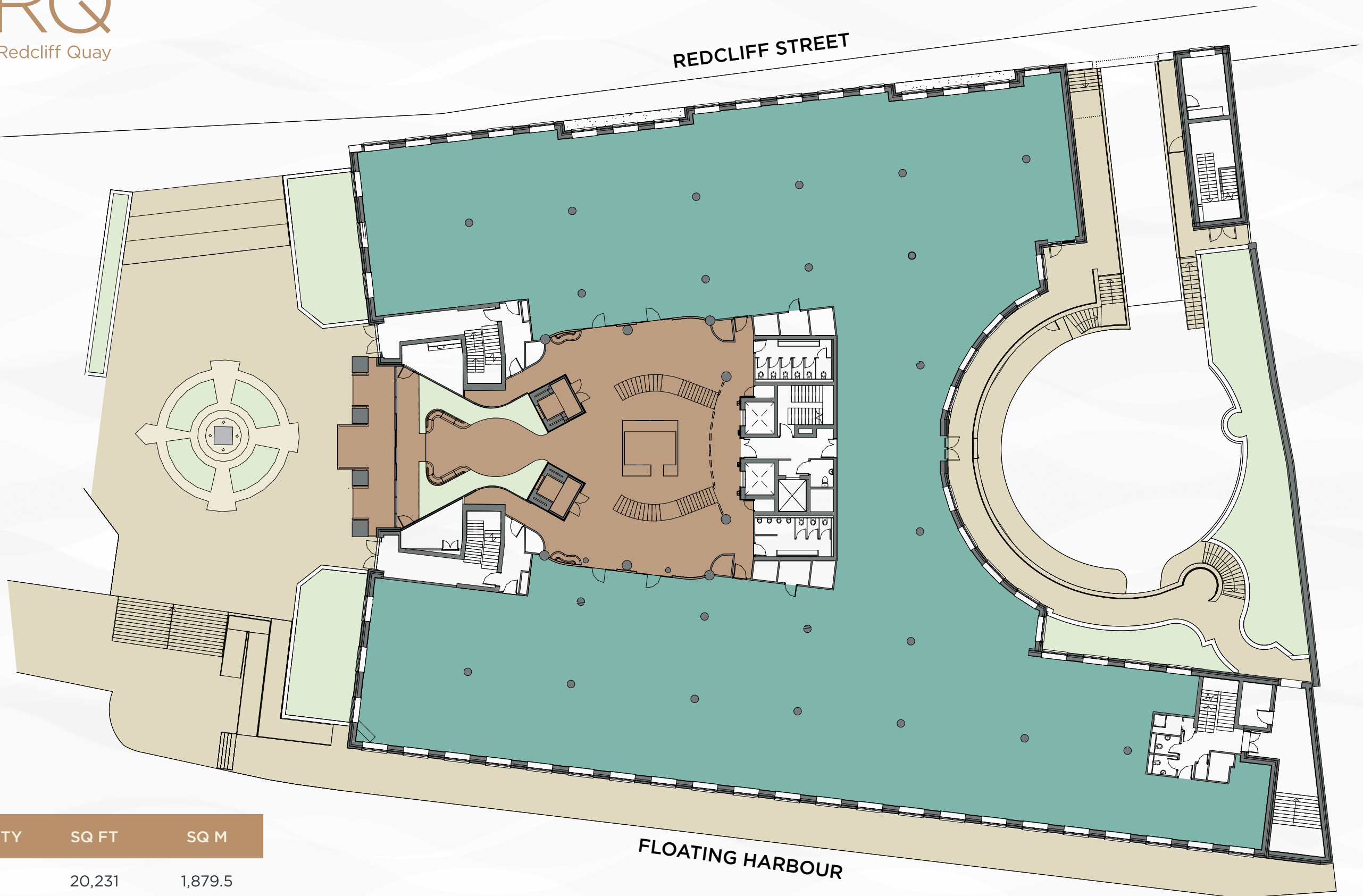
| FLOOR | AVAILABILITY | SQ FT | SQ M |
|--------------|--------------------------|---------------|----------------|
| 3rd Floor | Whole | 20,231 | 1,879.5 |
| 2nd Floor | Suite A | 16,922 | 1,572.1 |
| 1st Floor | Suite B | 4,537 | 421.5 |
| Ground Floor | Whole | 18,746 | 1,741.6 |
| TOTAL | Net Internal Areas (NIA) | 60,436 | 5,614.7 |

REDCLIFF STREET

GROUND FLOOR

18,746 sq ft 1,741.6 sq m


- Entrance
- A Piazza
- ☕ RQ Coffee







FLOATING HARBOUR

| FLOOR | AVAILABILITY | SQ FT | SQ M |
|--------------|--------------------------|---------------|----------------|
| 3rd Floor | Whole | 20,231 | 1,879.5 |
| 2nd Floor | Suite A | 16,922 | 1,572.1 |
| 1st Floor | Suite B | 4,537 | 421.5 |
| Ground Floor | Whole | 18,746 | 1,741.6 |
| TOTAL | Net Internal Areas (NIA) | 60,436 | 5,614.7 |

1ST FLOOR

 4,537 sq ft 421.5 sq m

-  Available space
-  Let space
-  Reception
-  Terrace / Piazza



| FLOOR | AVAILABILITY | SQ FT | SQ M |
|--------------|--------------------------|---------------|----------------|
| 3rd Floor | Whole | 20,231 | 1,879.5 |
| 2nd Floor | Suite A | 16,922 | 1,572.1 |
| 1st Floor | Suite B | 4,537 | 421.5 |
| Ground Floor | Whole | 18,746 | 1,741.6 |
| TOTAL | Net Internal Areas (NIA) | 60,436 | 5,614.7 |

2ND FLOOR

16,922 sq ft 1,572.1 sq m

- Available space
- Let space
- Reception
- Terrace / Piazza

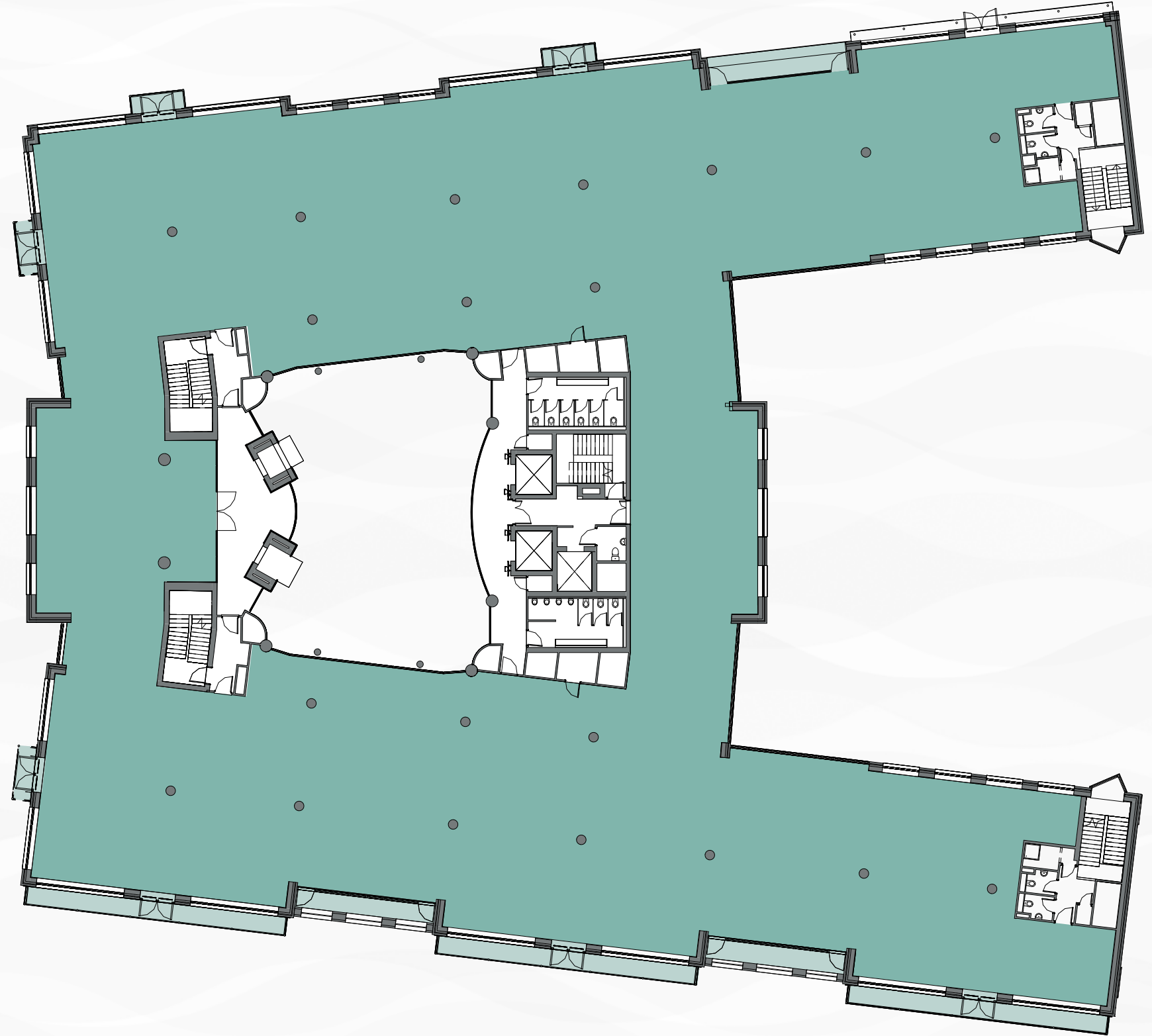


| FLOOR | AVAILABILITY | SQ FT | SQ M |
|--------------|--------------------------|---------------|----------------|
| 3rd Floor | Whole | 20,231 | 1,879.5 |
| 2nd Floor | Suite A | 16,922 | 1,572.1 |
| 1st Floor | Suite B | 4,537 | 421.5 |
| Ground Floor | Whole | 18,746 | 1,741.6 |
| TOTAL | Net Internal Areas (NIA) | 60,436 | 5,614.7 |

3RD FLOOR

20,231 sq ft 1,879.5 sq m

- Available space
- Let space
- Reception
- Terrace / Piazza



| FLOOR | AVAILABILITY | SQ FT | SQ M |
|--------------|--------------------------|---------------|----------------|
| 3rd Floor | Whole | 20,231 | 1,879.5 |
| 2nd Floor | Suite A | 16,922 | 1,572.1 |
| 1st Floor | Suite B | 4,537 | 421.5 |
| Ground Floor | Whole | 18,746 | 1,741.6 |
| TOTAL | Net Internal Areas (NIA) | 60,436 | 5,614.7 |